



# *Simply Scouting* *Simplement du Scoutisme*

22<sup>nd</sup> World Scout Jamboree Sweden 2011  
22<sup>ème</sup> Jamboree Scout Mondial Suède 2011

*Bulletin 5: November 2010*

## *Welcome from His Majesty the King of Sweden*



Dear Scout friends,

I have been a Scout for more than 50 years, and it gives me great pleasure that Sweden is hosting the 22<sup>nd</sup> World Scout Jamboree 2011. Scouting gives young people the tools to become active citizens and leaders, and what better way to promote international understanding than to gather 30 000 young people in one place and have fun under the motto “Simply Scouting” in Sweden.

I attended the national Jamborees in 2001 and in 2007, and have seen the fields of Rinkaby filled with Scouts. That was a great experience, and I am looking forward to taking part in the World Scout Jamboree next summer. I hope that all countries take the opportunity to participate in this wonderful event, to make it as diverse and exciting as possible.

You as a Contingent Leader play an important role in making sure that the participants get their once in a lifetime experience. Scouting has meant a lot to me, let us together make sure that the participants feel the same when leaving the 22<sup>nd</sup> World Scout Jamboree 2011.

Welcome to Sweden!

Carl XVI Gustaf  
*His Majesty the King of Sweden*

# *Bulletin 5 Contents*

Contingent Check List: Registration and Personal Preparations	Page 3
Contribute – Develop – Inspire The IST Experience	Page 5
Welcome to the Subcamp	Page 6
Patrol Kit	Page 8
The Role of the Unit Leadership Team	Page 10
Culture Festival Day	Page 10
Preparatory Material	Page 11
Join-in-Jamboree	Page 11
Transport and Shipping	Page 12
Travel Bookings and Operation One World	Page 14
Home Hospitality – New application deadline	Page 15
Insurance	Page 15
Visa Information	Page 15
Participant Food	Page 16
Media and Public Relations Support for Contingents	Page 18
Children of Contingent Management Team	Page 19
Safe from Harm – An Update	Page 21
Code of Conduct	Page 21
Jamboree fee reminder	Page 22
Payments at the Jamboree	Page 22
The Contingent Extranet	Page 22
Participant Registration – An Update	Page 23
Heads of Contingent Visits	Page 23
Timetable	Page 23
Reminder: Information required!	Page 23
Contact Information	Page 24



## *Twitter & Facebook*

Find us on Twitter and Facebook:  
[www.worldscoutjamboree.se/twitter](http://www.worldscoutjamboree.se/twitter)  
[www.worldscoutjamboree.se/facebook](http://www.worldscoutjamboree.se/facebook)

# *Contingent Check List: Registration and Personal Preparations*

## **1. Previously**

By now, your Contingent Management Team should already have:

- Agreed in your National Scout Organization (NSO) that you will send a Contingent to the Jamboree
- Appointed a Head of Contingent
- Registered your Head of Contingent with the Jamboree Office
- Recruited a Contingent Management Team
- Developed a budget and finalised your national Jamboree fee
- Decided on your registration procedures
- Sent out information about the Jamboree to Scouts in your country
- Opened national registration for your Contingent

If you haven't done any of these steps, now is the time to get into action! What you should be doing now, at the start of 2011 is to:

## **2. Register your Contingent with the Jamboree Organisers**

Information about the Jamboree Registration System was sent out in the Registration Manual together with Bulletin 3. When you have collected all the relevant information from each of the members of your Contingent, you should submit this to the Jamboree Registration System.

If you have not yet received your Contingent's login information for the Jamboree Registration System, please contact the Jamboree Office at [contingent.support@worldscoutjamboree.se](mailto:contingent.support@worldscoutjamboree.se).

## **3. Send in your registration fees**

Registration fees for the 22<sup>nd</sup> World Scout Jamboree Sweden 2011 must be paid by 31 January 2011. Any Contingent paying registration fees after this date will

be charged a 5% late fee. Make sure your payment is sent in good time, so that it arrives in the Jamboree bank account BEFORE 31 January 2011. Please note that an international payment can take a few days and take that into account when making your payment.

## **4. Prepare your Contingent members**

Each group of people coming to the Jamboree should be prepared for what they are going to experience. Different people will need different preparation. Some things to think about when preparing your Contingent members are:

### **a. Participants:**

We are preparing so that all Participants at the World Scout Jamboree will have a great experience. However, if they have some basic preparations before they come, they will have even more time and opportunity to take part in all that the Jamboree has to offer. Participants should have basic camping skills. They will enjoy their Jamboree experience more if they have already spent some time in tents, and are capable of cooking their meals over gas or open fire.

If you are building new Jamboree Patrols of Scouts who don't already know each other, a good idea could be to organise some joint activities, email groups, or post-pals, so that they can get to know each other a little before arriving!

### **b. Unit Leaders:**

The leadership of the Unit Leaders is one of the most important factors in creating a wonderful experience for all Scouts attending the Jamboree. Take a look at the text included in this Bulletin about the Role of the Unit Leadership Team for tips on what your Unit Leaders should be prepared for, and think how you can help to prepare your Unit Leaders for this role.

**c. International Service Team (IST) members:**

Members of the IST should be able to speak English and/or French and be prepared to take on any task needed to ensure the success of the Jamboree. Think about what you can do to prepare your IST for their World Scout Jamboree experience, and to ensure that they are ready and willing to help our Jamboree be a great success. More information about the IST Experience can be found further on in this Bulletin.

**d. Contingent Management Team members:**

If you have any new members in your Contingent Management Team, who haven't been to a World Scout Jamboree before, a good idea could be to organise a

training day for them with people from your National Scout Organization who have been to a World Scout Jamboree – best are those who have been on a Contingent Management Team before. They can exchange experience and prepare for what they can expect at the Jamboree.

**5. Attend the third Heads of Contingent Visit**

The final Heads of Contingent Visit before the 22<sup>nd</sup> World Scout Jamboree will be held from 1 to 3 April 2011. This will be a great opportunity to talk with the Jamboree Planning Team and to organise the final preparations for bringing your Contingent to Sweden.



# *Contribute - Develop - Inspire*

## *The IST Experience*

An important part of making a successful Jamboree is ensuring that the IST members have a great experience as well. Just like the Participants we want them to experience the Jamboree concepts Meetings, Nature and Solidarity, and to leave the Jamboree with renewed inspiration and energy.

IST members are expected to work hard and help run the Jamboree. But they will also participate in an IST Experience programme and be part of a multicultural Patrol. The IST members will be immersed in everything the world of Scouting has to offer, and this will create opportunities to further develop the Scout Movement by sharing experiences with people from all over the world. There will also be ceremonies, activities and events for the IST just as there will be social time every day to spend with new and old friends.

### **The Patrol System**

The IST will be divided into Patrols of about eight members, including a Patrol Leader appointed before the Jamboree. The role of the Patrol Leader is to be a contact person and convey information to the rest of the Patrol during the Jamboree and help the team to work together effectively. In the Jamboree organisation there will also be a support structure where the Patrols can get help with problem solving and teambuilding. The Patrols will work and participate in the IST Experience Programme together.

IST members will live in Adult Town with other IST from their Contingent, where there will be plenty of opportunities for free time activities and places to meet like cafés.

### **The IST Experience Programme**

The IST Experience Programme will contribute to the IST members' personal development, so that they will leave the Jamboree enriched, motivated and with new skills. The programme is based on the Patrol's experiences at the Jamboree and will be fun and creative. The IST Experience Programme will include themes like Our World, Personal Development and Spiritual Experience.

### **The Job Allocation**

Every IST member should be prepared to take on any task needed to create a successful Jamboree. In their registration the IST will tell us what qualifications they have and we will use this information to assign the roles available. The IST Patrol will work with one area at the Jamboree, and will not be rotating between different areas. Their aim is to work and complete the tasks together.

We are depending on the Contingents to make sure that their IST fill in the registration as soon as possible, so that we are able to assign the Patrols tasks well in advance.

### **Important dates and more info**

All IST must arrive 25 July so that they can take part in the introduction and job training. The departure day for IST is 8 August. More information about the IST Experience will be published on the Contingent Extranet. There you can already find a power point presentation about the IST Experience that you can use when preparing the IST in your Contingent.



## *Want the Jamboree look?*

In anticipation of the 22<sup>nd</sup> World Scout Jamboree, it is possible to visit our web shop where you can purchase items and have them shipped home! This is also where you can buy Day Visitors tickets.

*Check out the shop at:*  
[www.worldscoutjamboree.se/shop](http://www.worldscoutjamboree.se/shop)



## *Welcome to the Subcamp*

The Subcamps and Subcamp Centres will be a great part of the Participants' Jamboree experience. This is where they will sleep, cook their food and meet new friends. There will be cafés, stages and spontaneous activities where they can meet people from all across the world. The atmosphere at the Subcamps is very important as this will be the Participants' home away from home.

### **Subcamp Names and Programme**

The Jamboree site will be divided into Towns, named after the seasons. The Subcamps will be named after famous cities and locations in Sweden, each one related to the Town's designated season.

The Subcamps' theme and atmosphere will be inspired by their names and the places they represent. For the Participants to start creating the atmosphere at home and learn more about Sweden, we have prepared a number of preparatory activities connected to Subcamp life. One of the activities is linked to the name of the Subcamp where the Unit will be staying, information that the Contingents will receive closer to the event. This and other activities can be found in the Preparatory Material, which you will read about further on in this Bulletin.

As expressed in Bulletin 4 we invite you to help us create a great Jamboree by preparing spontaneous activities. The spontaneous activities will be open for all Participants, IST members and visitors and will take place in the Main Square, Town Centres and the Subcamp Centres. The activities can be either mobile or stationary, and the activity-time can range from a few minutes to an hour. Please contact us at [contingent.support@worldscoutjamboree.se](mailto:contingent.support@worldscoutjamboree.se) in advance if you are planning on bringing an activity. Please insert "Spontaneous Activities" as subject of your email.

### **What to pack**

The Swedish summer weather can vary a great deal; from ten degrees Celsius and rain, to thirty degrees and bright sunshine. It is therefore important to bring clothes and equipment that can handle different kinds of weather conditions. Below is a suggested list of what the Participants should bring in their personal equipment, adjusted to Swedish camp conditions. As all Participants will be leaving the main campsite to take part in Camp in Camp, please ensure that they also bring a smaller bag suited for overnight stay.



### **Sleeping equipment**

Sleeping bag  
 Sleeping mat/ air mattress  
 Sleeping clothes

### **Hygiene articles**

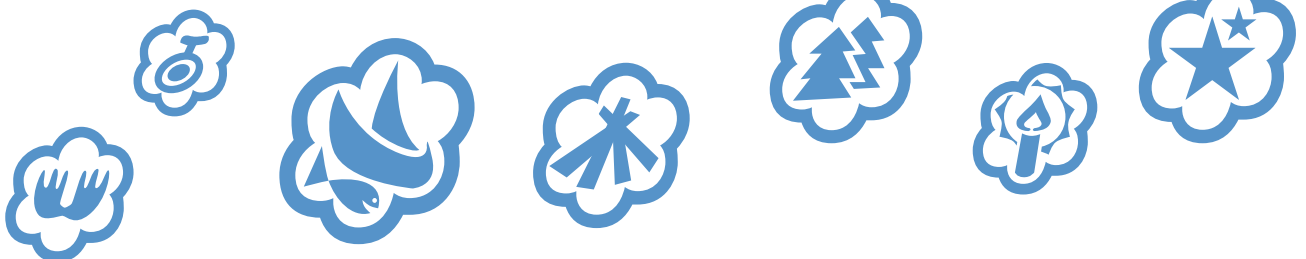
Tooth brush  
 Tooth paste  
 Soap  
 Shampoo  
 Towel  
 Sun block  
 Insect repellent  
 First aid kit

### **Clothes**

Scout or Guide uniform  
 Underwear  
 Shorts  
 Sandals  
 Sneakers  
 Warm hat  
 Sun hat  
 Mittens/gloves  
 Warm socks  
 Warm shirts  
 Long trousers  
 Long sleeved shirts  
 Short sleeved shirts  
 Windproof jacket  
 A full set of rain clothes  
 Rainproof walking boots or wellington boots

### **Other Items**

Passport  
 Plate and cup  
 Knife, fork and spoon  
 Water bottle  
 Flash light (and extra batteries)  
 Swimming suit  
 Shower shoes  
 Pencil and notebook  
 Smaller bag for shorter trips  
 Pocket money (credit or debit card)  
 Camera  
 Detergent for doing laundry  
 Sewing kit  
 Watch  
 Sunglasses  
 Badges for swapping



## Patrol Kit

When arriving at the Jamboree every Patrol will find a box at their campsite containing equipment necessary for their stay at the Jamboree. This is the Patrol Kit and it will contain all necessary equipment for one Patrol (9 Participants and 1 Unit Leader) to cook their food, camping equipment such as table and benches and dining shelter to block the sun or rain.

The cooking equipment includes two cooking pots, a frying pan and all the utensils the Patrol needs to cook breakfast, lunch and dinner. Included in the kit is also a gas stove with two burners large enough to fit the 8 litre pot and the frying pan at the same time. The dining shelter is large and designed to handle hard wind. It is about 8x8 meters and gives good shelter from all kinds of weather.

Every Unit (which consists of four Patrols) gets one dining shelter to share so that they will have a natural meeting point in their camp. All items included in the Patrol Kit have been tested for camping purposes and we have evaluated every item to ensure that the equipment is well suited for the Jamboree conditions.



### Unit Equipment

1 Dining shelter 14x14m (Roof size approximately 8x8 meters)

### Patrol Equipment

- 2 Benches
- 1 Table
- 1 Ring cooker (2 adjustable flames)
- 1 Cooking pot (5 liters)
- 1 Cooking pot (8 liters)
- 1 Frying pan
- 1 Kettle
- 2 Water carriers (à 10 liters)
- 1 Tap
- 1 Spoon
- 1 Fork
- 1 Turner
- 1 Wok spatula
- 1 Pair of cooking tweezers
- 4 Knives
- 2 Mixing bowls
- 1 Measuring jug
- 6 Plastic boxes with lids (à 2 liters)
- 2 Chopping boards
- 1 Peeler
- 1 Measuring kit
- 1 Grater
- 1 Strainer
- 1 Can opener
- 2 Butter knives
- 3 Wash up bowls
- 2 Dish brushes
- 1 Whisk
- 4 Tea towels

Please note that the Patrol Kit does not include personal equipment such as plates, drinking cups, cutlery, sleeping bags or tents. Lighting, such as paraffin lamps, and rope or string will not be provided either. For more information about personal equipment, please see “Welcome to the Subcamp” earlier in the Bulletin.



## *The role of the Unit Leadership Team*

The Unit Leadership Team is one of the most important factors in creating a good experience for all Participants attending the Jamboree. This team comprises 4 adults; one Unit Leader and three Assisting Unit Leaders. We count on the Unit Leadership Team to make sure that every Participant has a meaningful experience that is safe, exciting, fun and educational.

The Unit Leaders need to have good judgment and the leadership should be characterized by a listening, supporting and empowering attitude. They should be good ambassadors for their country. They should have experience in supporting adolescent Scouts and experience in camping. And of course have a lot of fun and remember that the leaders should enjoy the experience too!

Some examples of the role of the Unit Leadership Team:

### **Information and contacts**

- Be the first point of contact and cooperate with the Subcamp Management Team at all times
- Attend daily Subcamp meetings
- Take responsibility for sharing all necessary information with the Unit

### **Practical issues**

- Accompany the Unit to and from the Jamboree
- Have a daily meeting with their Unit
- Receive tasks from the Subcamp Leaders and pass them on to the Unit
- Inform the Participants of tasks and see that they are carried out
- Know how to handle a fire blanket, extinguish small fires and how to perform first aid
- See that Patrol tents, equipment and tent areas are kept neat and tidy

### **Health and morale**

- Take responsibility for the health, safety, and morale of the Unit
- Actively encourage all Participants to meet new friends
- Be responsible at all times for proper behaviour and conduct of the members of the Unit
- Ensure the Unit has discipline whilst on the Jamboree and make sure Participants understand Jamboree rules and any Unit rules they may have agreed on before the Jamboree
- Ensure that Participants eat a well balanced diet and oversee the cooking



## *Culture Festival Day*

The Culture Festival Day gives you the possibility to show your culture to the rest of the world. During a couple of hours in the afternoon on August 4th, the whole Jamboree will turn into a great festival with games, performances, music, food etc. Have you started thinking of how your Contingent will contribute to the Culture Festival Day? In the Preparatory Material you can find an activity that helps you include the Participants in the preparations.

Please note that all costs related to your contribution to the Culture Festival should be covered by your Contingent budget and that you are responsible for checking custom regulations to find out which items are allowed to be taken from your country to Sweden. Please also see the Contingent Extranet for more information about the practical arrangements and the support available.

# Preparatory Material

A World Scout Jamboree is for many Participants a completely unique experience. To support you in making your Participants fully prepared for this experience we have put together a Preparatory Material. The purpose of the Preparatory Material is to ensure they have a great camp experience and forever living memories of the 22<sup>nd</sup> World Scout Jamboree.

The Preparatory Material is a set of downloadable documents containing information and activities for the participating Patrols to do or give consideration to before the Jamboree, for example:

- Subcamp Life – get to know your friends in your Patrol and plan the decoration of your Unit area.
- Food – practice to cook local specialties and plan your food shopping.
- Cultural Festival Day – prepare to share your culture. What will you do and what will you bring?
- The Main Square – create your part of the great installation in the Main Square forest.

- Camp in Camp – prepare to meet your Camp in Camp host Scout group.
- Home Hospitality – prepare to show your hosts where you come from and to tell them about your life at home.
- Safe from Harm – make sure we get a Jamboree where everyone is treated respectfully.

The Preparatory Material is a tool for the Contingents in the preparations for going to the World Scout Jamboree and how it's used is up to each Contingent. You can do all activities exactly as suggested or you can use the material as a basis for creating your own activities. However, some of the activities are for all Units to complete and should be done as they are explained in the Preparatory Material. Where this is the case, the material will be clearly labelled so.

Most of the Preparatory Material is already available on the Contingent Extranet but more activities will be added during spring 2011.

## Join-in-Jamboree



Even if the World Scout Jamboree gathers a huge number of people there are still millions of Scouts in the world who don't get the opportunity to participate. The Join-in-Jamboree material aims to allow all those who are not able to come to the World Scout Jamboree to also feel the Jamboree spirit. We have put together activity suggestions to cover three days of programme at a Scout camp anywhere in the world, activities based on the World Scout Jamboree programme and themes. It is both activities that will be the same as on the World Scout Jamboree and activities especially created for the Join-in-Jamboree.

Those who take part in the Join-in-Jamboree programme will discover Sweden through typical games or recipes. They will have a taste of the World

Scout Jamboree activity modules while running their own Global Development Village, taking on the Patrol Quest or reflecting about culture at the People activity. They can also celebrate the Culture Festival Day, have an interreligious ceremony and get trained to be the Young Spokesperson of their gathering!

Even if the Join-in-Jamboree is not aimed at the members of your Contingent, you as a Contingent Management Team play a very important role in spreading and marketing the possibility within your country.

The Join-in-Jamboree material will be available to download from [www.worldscoutjamboree.se](http://www.worldscoutjamboree.se) in January 2011.

# Transport and Shipping

## Arrivals

On the IST arrival day (25 July) and the Participant arrival day (27 July) we will welcome and transport the Contingents from the designated entry points to the Jamboree. We have designated the following entry (and exit) points for the 22<sup>nd</sup> World Scout Jamboree:

### Flight entry (and exit) points:

- Copenhagen International Airport (CPH) in Denmark
- Malmö Airport (MMX) in Sweden

Please note that these two flight entry points are only for those who are arriving to these points by plane. We encourage as many European Contingents as possible to travel to the Jamboree site by coach or by train.

### Train entry (and exit) point:

- Kristianstad Railway Station (in Sweden)

### Coach and car entry (and exit) point:

- Jamboree Camp site

### Boat entry (and exit) point (for Sea Scouts):

- Åhus Harbour (in Sweden)

## We can also transport participants to the Jamboree if they arrive at

- Kristianstad Airport (KID) in Sweden

Kristianstad Airport will not charge any fees for landing or taking off for chartered flights connected to the Jamboree. Please note that regular flights to Kristianstad Airport are only available from Stockholm.

Transfer by coach or train will be available only from these designated entry points and will take IST members and Participants to the check-in area located about 3 kilometers south of the Jamboree site, and from there on to the Jamboree site.

## Departures

On the Participant departure day (7 August) and the IST departure day (8 August), coach transfers will be available from the Jamboree site to the designated exit points. The Jamboree Transport Team will set the

time of departure from the Jamboree site in order to make flights and trains. Information about the time of departure will be given during the Jamboree. The departure time from the Jamboree site will be set about 6 hours before flight departures from Copenhagen, about 4 hours before flight departures from Malmö and about 1 hour before train departures from Kristianstad.

## Shipping goods to the Jamboree

We recommend that you send equipment to the Jamboree site in advance. You should use pallets (EUR or Sea) or containers. If the goods are on pallets then we can help you with unloading and loading. We would prefer you to use containers measuring 6 meters as these can be placed near the Jamboree site for unloading and use during the Jamboree. Larger containers will be located about 5 kilometers from the Jamboree camp site. Pallets should be wrapped in plastic or have pallet collars as they will be stored outdoors. The Logistics Team will operate forklifts and tractors to handle goods on pallets.

### The address for goods to the Jamboree is:

World Scout Jamboree Sweden

*Contingent name - Country*

Rinkaby läger

SE-291 76 Rinkaby

SWEDEN

Goods can arrive at the Jamboree from 4 July until 22 July and have to be picked up between 10 August and 17 August. Goods will not be handled outside these dates.

If the pallets are marked with desired destination on the camp site, we can help the Contingents with transportation of pallets to Subcamps, Contingent HQ, etc before the Participants arrive.

If Contingents wish to transport goods to the campsite themselves, there will be possibilities to unload lorries/cars at the site between 20 July and 24 July. The only days for the Contingents to pick up goods themselves are 8 August and 9 August.

Contingents will need to provide us with shipping information in advance. Please fill in the “Preliminary Goods Transport Form” available on the Contingent Extranet and return it to [contingent.support@worldscoutjamboree.se](mailto:contingent.support@worldscoutjamboree.se) no later than 31 January 2011. Please insert “Preliminary Goods Transport Form” as the subject of your email.

In addition to your preliminary goods information in January 2011 we will also need detailed information at least two weeks before the goods arrive. More information about this will be available in Bulletin 6.

### Vehicles and parking areas

The Jamboree site will be mainly traffic free with the exception of emergency vehicles, transports for the disabled, and service vehicles. There will be a vehicle service for those with disabilities. It is important to provide requirements well ahead of the World Scout Jamboree via the registration process.

The Contingent Management Team will be able to buy bicycles and helmets to use at the Jamboree. The price will be approximately 1000 SEK for a bicycle plus helmet. As these are items that you purchase and not hire, you can take them home with you at the end of the event. Please note that the Jamboree will not provide bicycles for hire. The order and payment should be made through the Jamboree Web Shop at [www.worldscoutjamboree.se/shop](http://www.worldscoutjamboree.se/shop). As this is an item aimed at Contingent Management Teams and not other customers, it will be a hidden item in the shop which you find by entering the word “bicycle” in the search

field of the Jamboree Web Shop. The deadline for making this purchase is 31 January 2011.

The Jamboree cannot provide vehicles to Contingents. These will have to be hired directly through local hire companies. Please see the Contingent Extranet for a list of local hire companies.

For those of you who arrive to the Jamboree with your own car, there will be different parking areas. If you are Contingent Management Team, IST or belong to the Jamboree Planning Team, there will be a parking area north west of the Jamboree site. A parking permit will be required, which will be received at check-in. For other people taking part in the Jamboree there will be an additional parking area south of the camp site where cars, minibuses, buses and trucks can be parked but not moved during the Jamboree. For Day Visitors we have a visitors parking area also south of the Jamboree site. Buses will be available for transportation from the visitors parking area to the Jamboree site.

### How to drive to the Jamboree

To avoid traffic jams there will be traffic regulations and recommended routes to the Jamboree. If you arrive from Denmark via the bridge follow route E22 towards Kalmar. After passing Kristianstad, follow the signposts to the Jamboree. Please note that the recommended route might not be the route a GPS will give you. If you arrive from Ystad, Trelleborg, etc., find your way to route E22 and follow the same directions as described above. Vehicles transporting goods to the Jamboree will be directed another route to the site. There will be signpost indicating the route.



## *Travel Bookings and Operation One World*

The Jamboree has made an agreement with Resia, which is the biggest privately owned travel agency in the Nordic countries. The agreement has two aims:

- To support the Solidarity Programme, Operation One World. All travel booked through Resia will help Operation One World financially.
- To offer all Contingents and visitors advantageous flight prices and a professional service when booking their travel.

On the website [www.resia.se/jamboree2011](http://www.resia.se/jamboree2011) there is a contact form for Resia. On the form you will need to add information about dates, estimated numbers of travellers, preferred place of departure etc. After receiving the form, Resia will get back to you with

suggestions. You can then decide which package best suits you.

Resia can help with bookings from all countries in the world to the Jamboree. In addition Resia can advise you of travel packages available in the Nordic areas or the rest of Europe for excursions before and after the Jamboree. The company will also have a staffed travel agency at the Jamboree to offer further support.

The Jamboree organisation is currently in negotiation with various airlines on discounts for flights for Jamboree participants. All agreed discounts will be accessed when booking via Resia. We hope you will appreciate this service and you see the possibility to help support Operation One World 2011 financially.



## *Home Hospitality – New application deadline*

We have received a lot of interest in our Home Hospitality Programme. As the places we have are filling up fast, we have now decided that it is necessary for us to change the final date for application. If you wish to put in a request for Home Hospitality for your Contingent, you must have entered this information

into the Jamboree Registration System by 31 January 2010 at the latest. Contingents putting in a request for Home Hospitality before 31 January 2011 will have a final answer on whether we will be able to find them a placement, and if so where and when that placement will be, by 30 April 2011.

## *Insurance*

The Contingent Management Team must ensure that everyone taking part in the Jamboree obtains appropriate insurance cover that includes medical costs and personal belongings, as well as Contingent equipment. Participants from the European Union

should also bring the European Health Insurance Card. For detailed information on healthcare and insurance at the Jamboree please see “Terms and Conditions for the 22<sup>nd</sup> World Scout Jamboree” in Bulletin 2. All Bulletins can be downloaded from the Contingent Extranet.

## *Visa Information*

If members of Contingents are not Swedish citizens or citizens of one of the European Economic Area [EEA] countries, they may need entry clearance for Sweden before they can attend the World Scout Jamboree. Entry clearance is the formal term to describe the application process. The entry clearance certificate, more commonly called a visa, is placed in the applicant’s passport or travel document.

You can check if your Scouts will need a visa for Sweden, and find the nearest suitable embassy for applications, on the website of the Ministry for Foreign Affairs: [www.sweden.gov.se/sb/d/12386](http://www.sweden.gov.se/sb/d/12386).

Applications for visas to Sweden are made at a Swedish embassy. In places where Sweden does not have an embassy, another Schengen country can represent Sweden, process an application and issue visas on Sweden’s behalf.

The Jamboree Planning Team works closely with the Swedish Ministry for Foreign Affairs in order to obtain visas for all of the Jamboree participants to enter Sweden. Sweden is a party to the Schengen Agreement. This means that visas issued for Sweden apply to the entire Schengen area. For a complete list

of what countries are included in the Schengen area and how the agreement affects your visa application process, please see the above mentioned website of the Ministry for Foreign Affairs. If you are travelling to other countries within Europe as a part of your Jamboree Experience make sure to check if you need to apply for another visa.

### **How to apply**

If you do need a visa for Sweden, please make sure that you register for the Jamboree in good time, entering all the necessary details about every member of your Contingent. This will make it possible for us to assist you in your visa application process.

We are working with the Swedish authorities to see how we can plan the visa application process according to Swedish and European Union laws. From January 2011 a Visa Application Guide will be available, so please contact us if any members of your Contingent will need a visa to attend the Jamboree. According to EU laws no application is accepted earlier than three months before the event.

If you have any questions, please contact [contingent.support@worldscoutjamboree.se](mailto:contingent.support@worldscoutjamboree.se).



## *Participant Food*

### **Shops**

At the Jamboree there will be shops similar to grocery stores where the Participants buy their food. The food will be purchased using a point system, which is described further on in the text. There is however a number of differences compared to a regular grocery store:

- The number of supplies and the number of choices available will be less than a regular grocery store.
- The meals will be based on one daily main ingredient and many supplies to create the meal.
- The shop will carry food for breakfast, lunch, dinner and evening meal/snack.
- The shop will not carry any candy or ice cream.
- There will be one shop in each Town. The Participants are only allowed to collect food from the shop in the Town where they live.

Due to the fact that it will not be possible to keep food cold in the Subcamps, it is essential that the time from buying to cooking is kept short. The opening hours of the shops will be from early in the morning until late

evening. The shops will be closed a few hours each day in order for the staff to do an inventory check, clean and fill the shops with new supplies.

The main idea with the shop is that the Patrol will plan its own meals. The planned list of supplies will be posted on the Contingent Extranet and available for the Contingents prior to the Jamboree. All items will also have a value in points. The Patrol will have the possibility to plan their meals prior to coming to Jamboree.

We want all the Participants to have a good food experience, so it is important that they are helped to understand the shop concept before arriving to the Jamboree. The Participants will visit the shop every day, and pick up enough supplies to last them for that day. This is to avoid shortage in the shops and waste in the Subcamps.

### **Points system**

The Patrol will get a card which is pre filled with points

budgeted to last throughout the Jamboree. It will not be possible to buy anything in the shop unless the Patrol can provide a card to the cashier. Each payment will result in points being deducted from the balance. The Patrols will receive feedback on how much points they have spent.

One part of the Jamboree vision is to encourage meetings of different kinds and one of these will be over meals. We encourage Patrols to invite other Patrols for dinner. We also encourage the Patrol to plan and budget and make active decisions about what they eat. If they are planning to invite others for a meal and have a celebration, they will need to plan for this by having a couple of meals that do not need so many points.

### **Food Inspiration Area**

There will be an area near each shop which is called the Food Inspiration Area. The Food Inspiration Area will be able to give advice to the Patrol about:

- Recipes; answering questions like “What should I eat today that contains melon?”
- Dietary needs; answering questions like “Can I eat XXX if I am allergic to YYY?”, “This recipe contains pasta. What should we replace it with?”

In order to further teach the Participants about food, it will be possible to taste food in the Food Inspiration Area. The food which can be tasted is based on the same list of supplies provided to the Patrols and cooked with the same equipment which has been provided to the Patrols when they arrived at the Jamboree.

### **Menu**

We will produce a food book which will be handed out to the Patrol when they arrive at the Jamboree. The food book will also be uploaded to the Contingent Extranet and accessible for the Contingents in January 2011.

The food book will contain proposals for all meals during the Jamboree and will be based on one main ingredient per meal and day. The proposal for lunch will be a lighter meal as the Patrol may be away from the location where they cook and need to carry the lunch when they leave after breakfast. The proposal for the dinner will be a heavier meal.

There will be several suggestions for each meal, based on the main ingredient. Some examples are:

- Swedish food
- International food
- Vegetarian food
- A meal with minimal impact on the environment

For each meal there will be advice concerning what the Patrol needs to replace if somebody is allergic to gluten or lactose or if the food contains pork meat.

All the Participants will take part in Camp in Camp, where they bring food for 24 hours. The food book will contain advice on what to bring since this will be 24 hours where the Patrol has to plan in advance.

It is very important to emphasise that the recipes in the food book are proposals and not something that the Patrols must cook. We encourage the Patrol to plan their meals based on the main ingredient and the supplies in the shop.

### **Special food**

There will be many different dietary needs during the Jamboree based on medical, religious and cultural needs. The ambition is that if the need is known in advance, we will make sure that the Participant has a good food experience from the day they arrive at the Jamboree. In the event that a Participant’s special need is not indicated in advance by his/her Contingent, the Contingent shall be responsible for attending to the Participant’s special dietary requirements until we can get proper supplies.

As the Patrols are responsible for planning and buying their food, special dietary needs will be easier to handle. If a Participant is allergic to tomatoes, the Patrol will make sure that the food does not contain tomatoes when they go to the shop to buy their food.

There will be a number of individuals who have a very special dietary need, where it is easier to give individual assistance. Each shop will have an area where these individuals can collect their daily supplies.



## *Media and Public Relations support for Contingents*

Contingents will be offered support for their own PR and media work, available at the Jamboree Media Centre. This support includes access to press material in different languages (press releases, fact sheets, photo database), access to a limited number of computers for media and PR work, internet access for laptops, quiet room to do radio interviews, some printing facilities and assistance with journalists visiting the Contingents.

The Media Centre will have a part that is open for everyone to visit and learn more about how the Jamboree media works at the camp, and how we communicate with external media. However, the facilities in the Media Centre will only be available to the registered Contingent Media Contact Person from each country. In order to give you the appropriate support, please send in the “Contingent Media Contact Person Registration Form” no later than 31 December 2010. The form is available on the Contingent Extranet. Once we have received the registration we will contact your Media Contact Person and send further information, and updates on the material available before and during the Jamboree.

We also welcome you to invite journalists from your country to the Jamboree. To give them the best possible support, all journalists must be registered before arriving at the Jamboree. The “Journalist Registration

Form” is available on the Contingent Extranet and should be submitted no later than 26 June 2011. Please note that there will not be any on site accommodation available for visiting journalists. If there are journalists travelling as part of the Contingent, please contact [contingent.support@worldscoutjamboree.se](mailto:contingent.support@worldscoutjamboree.se) for further details.

There will be the possibility for Contingents to select a few IST members to support their media activity during the Jamboree. A very limited number of pre-allocated IST, based on the size of the Contingent, can be nominated by Contingents to work in this area.

Number of youth in the Contingent	Maximum number of IST permitted to be pre-allocated to the Contingent Media Team
73-144	1
145-288	2
289-576	4
577-1152	6
1153-2304	8
Over 2304	10

Members of the IST who are interested in working with media related issues in general but are not pre-allocated IST can indicate their area of interest when registering for the Jamboree, and the same routine as for other IST will apply.

## Young Correspondents and Young Spokespersons

A World Scout Jamboree is all about young people, and we want the ones taking part in the 22<sup>nd</sup> World Scout Jamboree to tell their story. Similar to previous events, we will run a Young Correspondents programme in Sweden. Young Correspondents are Participants selected by their Contingents to convey their Jamboree experience to fellow participants, people back home and the rest of the world. They will be given the opportunity to contribute content for the Jamboree media and to write stories for media in their own country.

We will also be having a Young Spokespersons programme. Here, selected Participants act as Young Spokespersons and will be speaking to professional journalists visiting the camp. The Young Spokespersons will spend part of their activity-time in this programme.

Both Young Correspondents and Young Spokespersons will get an inside-view of the work of the media at the Jamboree and will learn how to speak and report about the event. Selected Participants for both programmes should have the motivation to work as a correspondent or spokesperson and should be able to communicate

in English and/or French. It might be helpful if they already have some experience in working with media or have already had a Young Spokespersons experience. As places in the programme are limited we kindly ask each Contingent to start nominating as soon as possible. A Contingent can nominate a maximum number of two correspondents and two spokespersons for every 500 members of the Contingent (Contingents with less than 500 members can select two correspondents and two spokespersons, those with 501-1000 select four correspondents and four spokespersons etc.) to take part in the programme.

The “Young Correspondent Nomination Form” and the “Young Spokesperson Nomination Form” are available on the Contingent Extranet and should be submitted no later than 28 February 2011. Please insert “Young Correspondents/Young Spokespersons” as the subject of your email. As soon as you have nominated your Young Correspondents and Young Spokespersons, your Media Contact Person will get further information about the programme and how the participants can prepare.



## *Children of Contingent Management Team Members*

As a response to requests from a few Contingents, it has been decided that the 22<sup>nd</sup> World Scout Jamboree will allow Contingent Management Team members to bring their children to the Jamboree. The children must be younger than 10 years old on the day when the Jamboree starts (i.e. be born after 27 July 2001). The offer is made to Contingent Management Team Members who have difficulties to otherwise arrange child care and the purpose of allowing children is of course to facilitate participation for such Contingent Management Team Members.

If the child is over the age of three, day care can be offered during certain hours of the day provided that the child speaks English or Swedish.

Each Contingent Management Team should judge if they deem it necessary to bring children under these conditions. The World Scout Jamboree organisers reserve the right to deny registration of CMT children if it seems to be in violation of the above specified purpose.

A fee will be charged for children so participating. The fee has not yet been established but will be calculated based on actual cost and can be provided upon request.

Please note that this offer does not include children of IST members or Unit Leaders.

For more information, please contact [contingent.support@worldscoutjamboree.se](mailto:contingent.support@worldscoutjamboree.se)



## *Safe from Harm – An Update*

The Safe from Harm course is now available! It is an online course, and you can find information on [www.worldscoutjamboree.se/safefromharm](http://www.worldscoutjamboree.se/safefromharm) and the Contingent Extranet. The course is available in English, French, Spanish, Russian and Arabic and also in audio format. It takes about 1,5 hour to complete.

The course is mandatory for all IST and Jamboree Planning Team members, but we also encourage all other leaders and adults in the Contingent to take the course as part of their preparations for the Jamboree. It is possible to take the course even if you are not taking part in the Jamboree, or still not fully registered for the Jamboree. Everyone who passes the course will receive a certificate.

Together with this Bulletin you will receive a CD containing the course, and the course material in pdf format so it can be used by someone without access to computers. The pdf-document can also be downloaded from the Jamboree website. Please note that in order

to complete the course you need to pass an online test, which will then be noted in the Jamboree Registration System. If you have problems completing the course online, please contact the Jamboree Office.

It is also important to prepare the Participants. Feeling safe and secure in your own Unit is the first step towards enjoying the Jamboree. Information and some suggestions for how to prepare the Scouts are available on the Jamboree website and in the Preparatory Material on the Contingent Extranet.

At the Jamboree there will be a support structure to deal with Safe from Harm related issues. In the Subcamps a Child Protection Officer will be available to deal with questions and concerns from Participants, Unit Leaders and IST. The Child Protection Officer will be collaborating with several other functions at the Jamboree to ensure that everyone gets the appropriate support. A similar function will also be available in Adult Town.

## *Keeping Children Safe from Harm – Taking action together*

During the Jamboree (1 August) there will be a one day international conference called Keeping Children Safe from Harm – Taking Action Together. The Swedish Guide and Scout Council and WOSM will arrange the conference together and every National Scout Organization will be invited to send one Chief

Commissioner or other senior volunteer. Other organisations with activities for youth will also be invited, and the Royal Family of Sweden will be represented at the event. An invitation with further information will be sent out to all National Scout Organizations closer to the event.

## *Code of Conduct*

Following discussions at the second Heads of Contingent Visit, the Jamboree Executive Team have now published the Code of Conduct for the 22<sup>nd</sup> World Scout Jamboree. There is one code of Conduct for Youth Participants, and one for adults at the Jamboree.

The Code of Conduct texts are available for download on the Contingent Extranet for Contingents who wish to share these documents with their members prior to the Jamboree

## *Jamboree fee reminder*

Please note that all deadlines regarding fee discount have now passed, and that payments received after 1 October 2010 are not eligible for a discount. The final payment must be paid by 31 January 2011 or an additional 5% will be charged.

### **Bank Transfers**

Account name: Svenska Scoutradet

Account holder's address:

Box 42034

SE-126 12 Stockholm

Sweden

IBAN: SE10 8000 0831 3950 4325 0512

SWIFT/BIC: SWEDSESS

Bank name: Swedbank

City: Stockholm

Country: Sweden

We would like to remind all Contingents that when making a payment, please note the following:

- Each transfer must include both the name of your National Scout Organization and a reference to what the payment should cover (for example "deposit for 100 people").
- Please inform the Jamboree Office about every transfer you make, including the date the transfer was sent, the bank from which it was sent, the reference information you included and the amount you believe we shall receive.
- The amount credited to your National Scout Organization will be net of any bank charges applied by your bank and our bank upon receipt of the transfer.
- When following the payment schedule, please ensure that you allow sufficient time for bank transfers to be credited to our account according to the dates shown.
- All payments must be made in SEK (Swedish Kronor).

All Contingents that have made payments and sent the above listed information to the Jamboree Office should receive confirmation of their payment. If you have made a payment but not received confirmation, please contact [contingent.support@worldscoutjamboree.se](mailto:contingent.support@worldscoutjamboree.se).

For more information, please see Bulletin 2 under "Terms and Conditions for the 22<sup>nd</sup> World Scout Jamboree". All Bulletins can be downloaded from the Contingent Extranet.

### **Payments at the Jamboree**

To reduce the handling of cash as much as possible we encourage all participants to use credit and debit cards instead of cash at the Jamboree. All major credit cards (VISA, MASTERCARD, AMEX etc.) will be accepted in the shops and cafés on the Jamboree site. We recommend that all participants check with their bank to ensure that their card can be used abroad.

## *The Contingent Extranet*

The Contingent Extranet is where you as a Head of Contingent or Contingent Management Team member can find all the published materials in electronic form. We have now made a revision of the Contingent Extranet, in order to make it easier to find the information you need. You can also subscribe to a monthly Contingent Extranet newsletter, where new and modified articles will be listed. We also have a search engine, to help you find specific information that you are looking for. Welcome to the Contingent Extranet!

If you have yet to receive login information, please contact:  
[contingent.support@worldscoutjamboree.se](mailto:contingent.support@worldscoutjamboree.se).



## Participant Registration – An Update

By now all Contingents who have registered a Head of Contingent or a Contingent Contact should have received login details for the World Scout Jamboree Registration System. If you have not yet received login details or have any questions regarding registration, please contact [contingent.support@worldscoutjamboree.se](mailto:contingent.support@worldscoutjamboree.se)

### Timetable:

To help Contingents with their planning, we have prepared a timetable below showing a number of significant “milestones”. This list may be subject to change.

-  10-14 January 2011  
39<sup>th</sup> World Scout Conference, Brazil
-  March 2011  
Bulletin 6
-  1 – 3 April 2011  
Third Heads of Contingent Visit
-  27 July – 7 August 2011  
22<sup>nd</sup> World Scout Jamboree

## Heads of Contingent Visits

### Heads of Contingent Visit 2

At the beginning of June, Heads of Contingent Visit 2 took place near the Jamboree camp site. It was a great weekend where the Heads of Contingent could meet Jamboree Planning Team from all the different areas and receive information. The weather was fantastic and we all went home with a very positive feeling and are looking forward to the third and final Heads of Contingent Visit and of course the Jamboree itself. On the Contingent Extranet you will find all the information and presentations from the weekend, both in English and in French.

### Heads of Contingent Visit 3

The Heads of Contingent Visit 3 will take place 1–3 April 2011. The visit is for Heads of Contingents and members of Contingent Management Teams. We will send information detailing how to register in early 2011. At the visit you will have the possibility to meet the Jamboree Planning Team again and get the latest information about the Jamboree, before we all meet again in July to kick off the 22<sup>nd</sup> World Scout Jamboree Sweden 2011.



## Reminder: Information required!

Please check that you have returned the below forms to us and if not, please do so urgently.

We rely on your inputs in order to plan the Jamboree. If you need additional copies of the forms please contact the Jamboree Office or download these from the Contingent extranet. Thank you in advance.

<i>Form</i>	<i>Sent with</i>
Appendix I: Head of Contingent Nomination Form	Bulletin 1 and Circular 1
Appendix IV: Nomination of Special Guest Form	Bulletin 4
Appendix V: Application for Contingent Reception	Bulletin 4
Appendix VI: Preliminary Goods Transport Form	Contingent Extranet
Appendix VII: Contingent Media Contact Person Registration Form	Contingent Extranet
Appendix VIII: Journalist Registration Form	Contingent Extranet
Appendix IX: Young Correspondent Nomination Form	Contingent Extranet
Appendix X: Young Spokespersons Nomination Form	Contingent Extranet



## *Contact Information*

Address:

22<sup>nd</sup> World Scout Jamboree  
The Swedish Guide and Scout Council  
Box 42034  
SE-126 12 Stockholm  
Sweden

E-mail: [info@worldscoutjamboree.se](mailto:info@worldscoutjamboree.se)

Tel no: +46 8 555 065 00

Fax no: +46 8 555 065 99



*Simply Scouting*  
*Simplement du Scoutisme*